

■ made  
■ in  
■ germany



Ultrasonics.Steam.Ultraclean.



Steam cleaning devices

## Elmasteam 4<sup>s</sup> basic

**Reliable and effective steam jet cleaning - Made in Germany**

- Professional 4.5 bar steam pressure with long steam availability
- High user safety and long service life of the steam cleaner
- Compact design - space saving tabletop model or with wall brackets
- Quality product made by Elma with 3 years warranty\*

# Elmasteam 4<sup>5</sup> basic

## with fixed nozzle or flexible hand piece

Elmasteam 4<sup>5</sup> basic steam cleaning devices are equipped with a steam pressure of 4.5 bar. Even sensitive parts can be quickly and efficiently cleaned with Elmasteam 4<sup>5</sup> basic devices.

Furthermore pre-cleaning with steam is environment-friendly as the steam is free of any chemicals. Contaminations can be easily removed due to high steam pressure and steam temperature of Elmasteam 4<sup>5</sup> basic devices.

In order to reduce maintenance effort and to extend service intervals, it is recommended to use demineralised or distilled water.

If mains water is used, water filtering cartridges by Brita (optional accessory) can be used.

Elmasteam 4<sup>5</sup> basic is suited to clean worn and mounted jewellery as well as watch straps, jewellery chains and rings - also with set stones.

In industry and workshop, Elmasteam 4<sup>5</sup> basic is used to clean engine parts, tools and components during the overhaul.

Dental prostheses are steam-cleaned during the individual production steps in dental laboratories.

### There are two versions of Elmasteam 4<sup>5</sup> basic:

#### With fixed nozzle

Components and parts can be held securely with both hands and be cleaned under the fixed nozzle.

#### With flexible hand piece

With the flexible hand piece components and parts can be steam cleaned all around quickly and effectively.



Elmasteam 4<sup>5</sup> basic HP

# Elmasteam 4<sup>5</sup> basic

## Thoughtout steam technology

QUALITY and SAFETY are top priorities at Elma. This mean, only tried and tested components and high quality materials are used.

The pressure tank with a filling volume of approx. 3.3 litres is cast from special material. The heating is integrated and emits its energy into the water over a large area. Pressure tank and heating are thus very long-lasting and robust. Due to the strong heating, the steam is available for a long period of time and the parts cleaning can be carried out efficiently.

The high user safety is ensured by the integrated pressure relief valve and the automatic temperature cut-off at overheating of the heating system. This was confirmed by the TÜV type test according to DIN EN 61010-1 and the CE marking.

Therefore and provided that the steam device is used in single-shift-operation and is operated properly, there is a warranty period of 3 years for Elmasteam 4<sup>5</sup> basic steam cleaning devices.\*

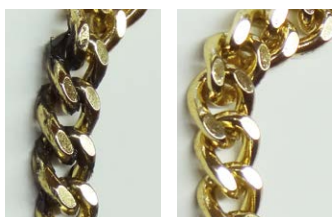
### Application examples before and after the cleaning

Watch case



Removal of polishing paste

Jewellery chain



Removal of dirt from wearing

Dental prosthesis



Cleaning of dental prostheses

Gear drive



Removal of grease, oil and swarf

#### ■ Simple start-up

fill water via the integrated funnel,  
close screw and let the machine heat up

#### ■ Fixed nozzle

for working with  
both hands

#### ■ Indirect heating:

- short heating-up time
- high steam availability
- simple decalcification  
and tank cleaning
- long service life

#### ■ Practical foot pedal

for switching the steam  
on and off



Elmasteam 4<sup>5</sup> basic



Ultrasonics.Steam.Ultraclean.

# The Elma cleaning concept with Elmasteam 4<sup>5</sup> basic

Due to their high performance, Elmasteam steam jet cleaners are used for pre-cleaning before the cleaning with ultrasound or for intermediate cleaning in the production process.

Elmasteam steam jet cleaners are also used for rinsing.

The steam is free of minerals. Therefore all parts and components are spotless after the drying.



## Technical data

|                            |      |
|----------------------------|------|
| Operating pressure (bar)   | 4.5  |
| Pressure tank volume (l)   | 4.0  |
| Max. filling volume (l)    | 3.3  |
| Max. power consumption (W) | 2800 |
| Weight (kg)                | 6.75 |

|   |                 |
|---|-----------------|
| Steam temperature in the tank (°C)      | max. 155        |
| Steam temperature at the nozzle (°C)    | max. 135        |
| Dimensions with hand piece W/D/H (mm)   | 290 / 320 / 420 |
| Dimensions with fixed nozzle W/D/H (mm) | 250 / 320 / 420 |
| Length of fixed nozzle (mm)             | 140             |

## Further accessories



Wall bracket set for wall mounting Elmasteam 4<sup>5</sup> basic



Water filter cartridge by Brita

## Scope of delivery



Rinsing set · Sieve · Spare-O-Rings · Dump hose · Tweezers · Test strips for chloride content and water hardness